

# INTRODUCTION

This year the Moto-Ski parts catalogue is different in many ways, if compared to the ones published previously. The main differences of the "72" edition are:

a) Photography instead of line illustrations has been used (only the engine section and the electrical wiring diagrams are shown by means of line illustrations).

b) A new numbering system of 6 digits has been applied. It has to be noted that any of these new numbers are related to a specific group of the vehicle (Example: The series of numbers included between 800000 to 899999 is related to the engine).

c) The catalogue has been divided in 9 different sections. In order, these sections are:

## SECTION 1

### FRAME

This section includes the frame, the seat and the backrest.

## SECTION 2

### HOOD

This section includes the hood, the dash and the console.

## SECTION 3

### TRACK

This section includes the track, the suspension and the axles.

## SECTION 4

### SKI AND STEERING

This section includes the steering column, the steering linkages and the ski ass'y.

## SECTION 5

### TRANSMISSION

This section includes the drive and driven pulleys and the chain case and brake.

## SECTION 6

### ELECTRICAL

This section includes the electrical system's components and the different wiring diagrams.

## SECTION 7

### FUEL AND EXHAUST

This section includes the fuel system (the carburetor is a section of Section #8. Engine) and the exhaust system.

## SECTION 8

### ENGINE

This section includes the engine attachments (i.e. engine mount or base) the different engines used with the "72" models and the carburetors.

## SECTION 9

### MISCELLANEOUS

This section includes the special attachments, the tools and accessories related to the Moto-Ski snowmobile.

d) The information related to the different components shown in one illustration is included into a text (divided in 5 columns) located under or beside the illustration.

#### 1 Column "Item".

Under this column, the reference number of a part shown in the illustration is listed.

#### 2 Column "Number".

Under this column the number (6 digits) of the part is listed.

#### 3 Column "Description".

Under this column, a short description of the part is given.

#### 4 Column "Qty".

Under this column, the number of the same part required for one vehicle is given.

Note: The abbreviation "A.R." (as required) is sometimes used in this column.

#### 5 Column "Application".

The vehicles or models on which a specific part is used are listed under this column. Since there are in "72" many different Moto-Ski models, a code system has to be used to identify these models. The symbols used in the code are:

**B** for Capri with J.L.O. (340 & 399) and B.S.E. (440).

**B\*** for Capri with Hirth (292, 340 & 340E).

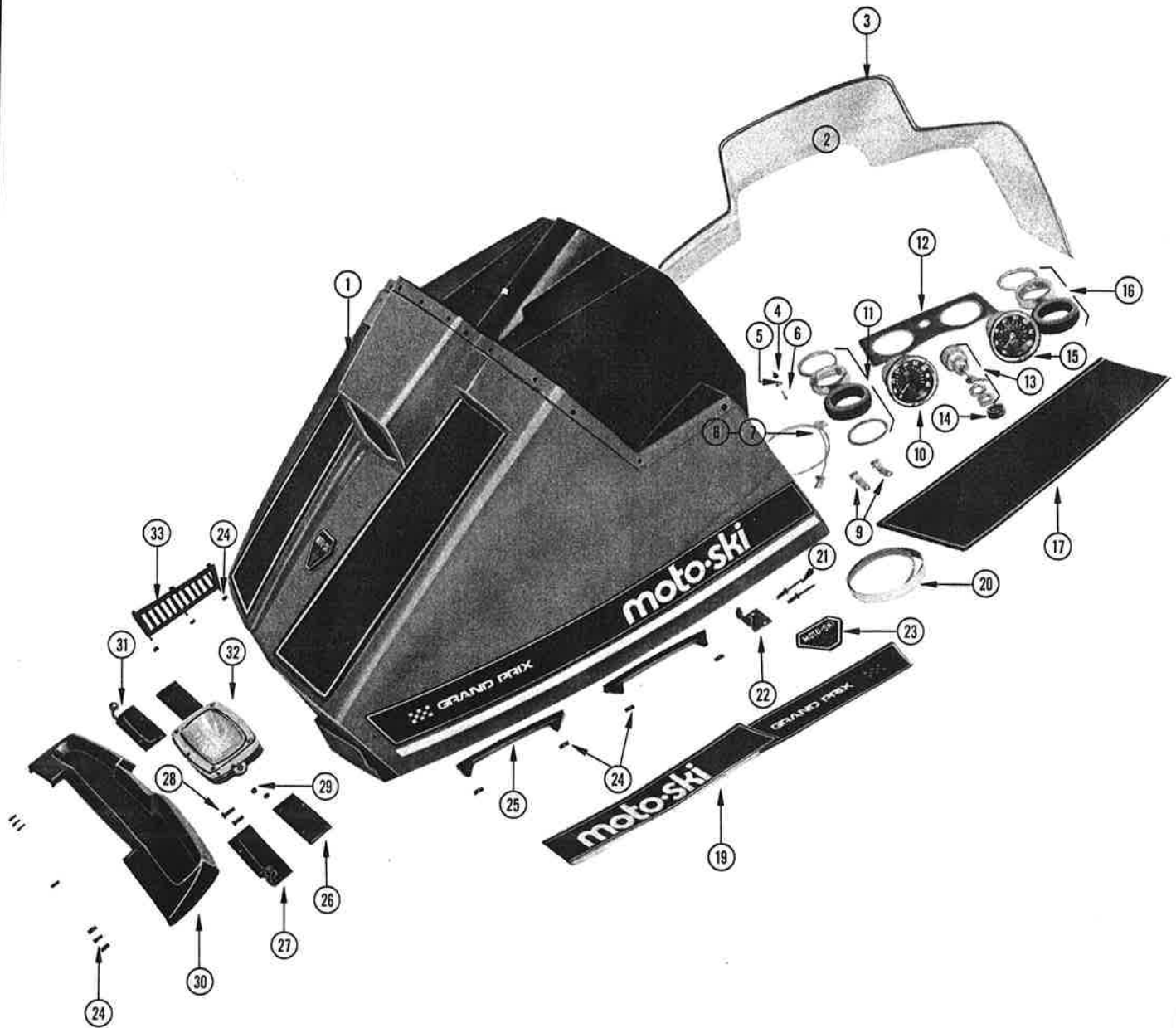
**C** for Zephyr with B.S.E. (440 & 440E).

**C\*** for Zephyr with B.S.E. (340).

**D** for MS-18.

**N** for Grand Prix.

# HOOD (GRAND-PRIX)



# HOOD (GRAND-PRIX)

ITEM	NUMBER	DESCRIPTION	QT'Y	APPLICATION	ITEM	NUMBER	DESCRIPTION	QT'Y	APPLICATION
1	090078	HOOD	1	G.P.	20	090093	REFLECTIVE STRIP	2	G.P.
2	090077	WINDSHIELD	1	G.P.	21	630032	POP RIVET	4	G.P.
3	091108	WINDSHIELD MOULDING	1	G.P.	22	090081	HOOD CATCH BRACKET	2	G.P.
4	640018	SCREW RECEPTACLE (8-32)	15	G.P.	23	090031	"MOTO-SKI" NAME PLATE	1	G.P.
5	620014	WASHER (8)	15	G.P.	24	610043	SPEED CLIP	10	G.P.
6	600065	SCREW-WINDSHIELD (8-32x $\frac{3}{4}$ " )	15	G.P.	25	090084	FRONT SCOOP	2	G.P.
7	090086	HOOD RETAINER CABLE	1	G.P.	26	090099	HINGE RUBBER SPACER	2	G.P.
8	630007	HOOD RETAINER RIVET	1	G.P.	27	090057	LEFT HAND HINGE	1	G.P.
9	090039	WIRING HARNESS BRACKET	2	G.P.	28	600119	BOLT (10-32x $\frac{3}{4}$ " )	4	G.P.
10	690009	TACHOMETER ASS'Y	1	G.P.	29	610006	NYLOCK NUT (10-32)	4	G.P.
11	690010	TACHOMETER SHOCK ABSORBER	1	G.P.	30	090088	FRONT SHELL	1	G.P.
12	090047	SPEEDO & TACHO DECAL	1	G.P.	31	090056	RIGHT HAND HINGE	1	G.P.
13	690076	IGNITION SWITCH ASS'Y	1	G.P.	32	690030	HEAD LAMP ASS'Y	1	G.P.
14	690071	IGNITION SWITCH RUBBER CAP	1	G.P.	33	090051	SIDE LOUVRE	1	G.P.
15	690004	SPEEDOMETER ASS'Y	1	G.P.					
16	690007	SPEEDOMETER SHOCK ABSORBER	1	G.P.					
17	090053	FRONT DECAL SET	1	G.P.					
19	090092	SIDE DECAL SET	1	G.P.					

## NOTES

---

---

---

---

---

---

---

---

---

---

---

---

---

---

---

---

---

---

---

---

---

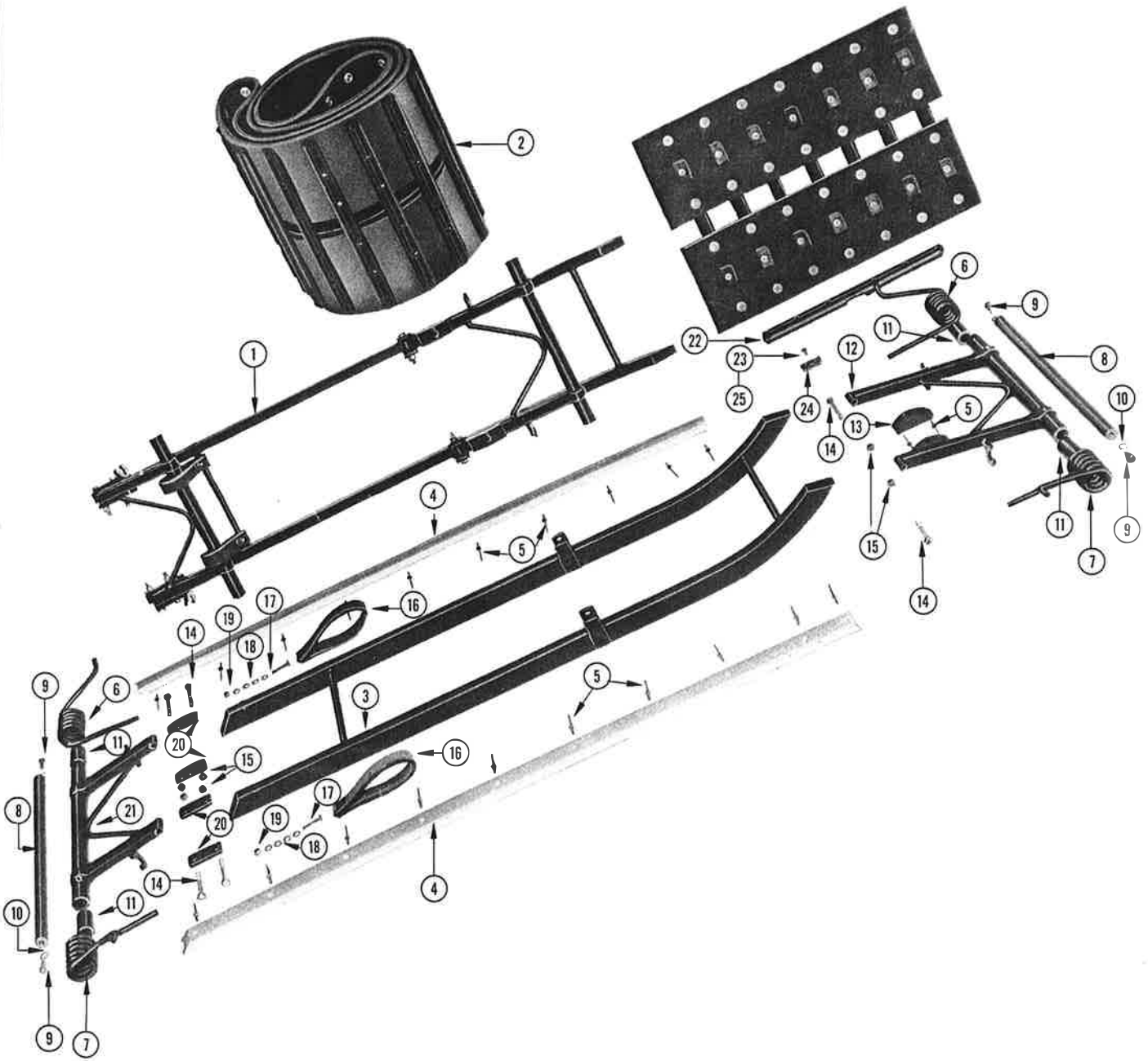
---

---

---

---

# SLIDER SUSPENSION (GRAND-PRIX)



## SLIDER SUSPENSION (GRAND-PRIX)

ITEM	NUMBER	DESCRIPTION	QT'Y	APPLICATION	ITEM	NUMBER	DESCRIPTION	QT'Y	APPLICATION
1	030065	SLIDERS ASS'Y	1	G.P.	15	610015	NYLOCK NUT (5/16"-24)	6	G.P.
2	030058	TRACK ASS'Y	1	G.P.	16	030080	STRAP LIMITER	2	G.P.
3	030066	SKID FRAME	1	G.P.	17	600083	BOLT (3/4"-20x1 1/4")	2	G.P.
4	030082	NYLON SLIDER INSERT	2	G.P.	18	620002	FLAT WASHER (3/4" I.D.)	8	G.P.
5	630006	POP RIVET	AR	G.P.	19	610023	NYLOCK NUT (3/4"-20)	2	G.P.
6	030092	L.H. SUSPENSION SPRING	2	G.P.	20	030069	LINK PLATE	4	G.P.
7	030093	R.H. SUSPENSION SPRING	2	G.P.	21	030067	REAR SUPPORT	1	G.P.
8	030014	CROSS SHAFT	2	G.P.	22	030002	CLEAT	39	G.P.
9	600033	BOLT (5/16-24x3/4")	4	G.P.	23	030060	RIVET (FOR SLIDER PLATE)	78	G.P.
10	620010	STAR WASHER 5/16" I.D.	4	G.P.	24	030059	SLIDER PLATE	78	G.P.
11	030096	SPRING BUSHING	4	G.P.	25	030004	RIVET (STANDARD FOR CLEAT)	156	G.P.
12	030068	FRONT SUPPORT	1	G.P.					
13	030081	NYLON LIMITER	2	G.P.					
14	600046	BOLT (5/16-24x2")	6	G.P.					

### NOTES

---

---

---

---

---

---

---

---

---

---

---

---

---

---

---

---

---

---

---

---

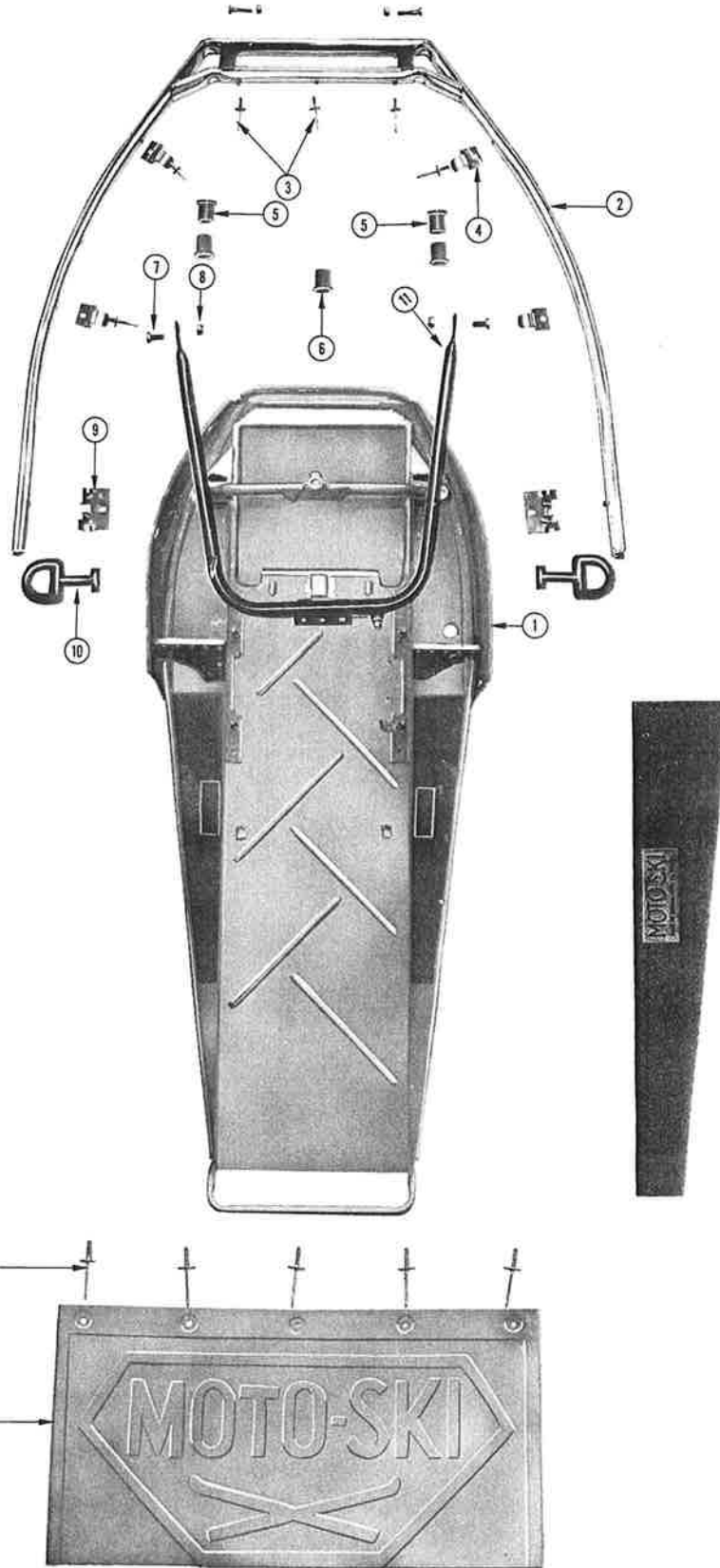
---

---

---

---

# FRAME CADET



**CADET FRAME**

ITEM	NUMBER	DESCRIPTION	QTY	APPLICATION	ITEM	NUMBER	DESCRIPTION	QTY	APPLICATION
1	010154	FRAME CD. EL.	1		10	010059	RUBBER HOLDER	2	
	010176	FRAME CD. MA.			11	020016	STEERING SUPPORT	1	
2	010001	FRONT BUMPER	1		12	010082	FOOT PAD SET	1	
3	630030	POP RIVET	7		13	710005	REAR REFLECTOR	2	
4	010013	HOOD GUIDE BRACKET	4		14	630011	POP RIVET	5	
5	020051	NYLON BUSHING (SKI LEG)	4		15	010125	SNOW FLAP	1	
6	020082	NYLON BUSHING (STEERING)	1						
7	600057	BOLT 5/16-24x1"	2						
8	610015	RYLOCK NUT 5/16-24	2						
9	010155	HOOD LATCH BRACKET	2						

**NOTES**


---

---

---

---

---

---

---

---

---

---

---

---

---

---

---

---

---

---

---

---

---

---

---

---

---

---

---

---

---

---

---

---

# SEAT (CADET)



ITEM NUMBER	DESCRIPTION	QTY	APPLICATION	ITEM NUMBER	DESCRIPTION	QTY	APPLICATION
1	080043 SEAT ASS'Y MANUAL ONLY	1					
2	080052 SEAT COVER	1					
3	090044 SAFETY BELT	1					