

Informations techniques / Technical Matters

DATE November 8th, 1971.

SUBJECT: V.D.O. TACHOMETER INSTALLATION.
1972 MS-18, GRAND PRIX AND ACCESSORY.

To prevent confusion in the installation of V.D.O. tachometer assembly on a Moto-Ski snowmobile, proceede as follow:

Note: Make sure, during pre-delivery, of proper mounting.

1° Insert the rubber ring cushion into the dash assembly, insuring a good fit of the dash material into the rubber ring cushion groove (Figure 1, item "A").

2° Install the spacer ring into the rubber ring cushion (Figure 1, item "B").

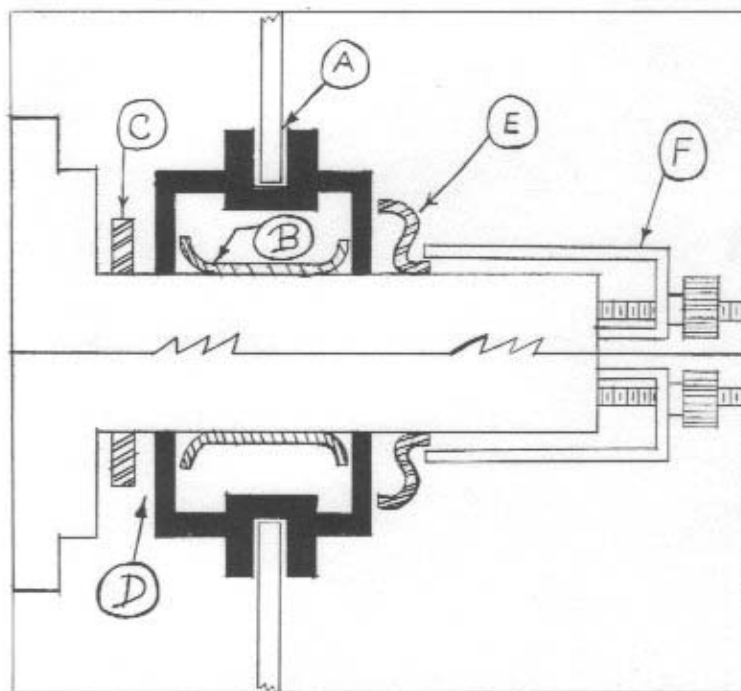
3° Slide the flat washer around the tachometer body (Figure 1, item "C").

4° Press the tachometer and flat washer assembly into the rubber ring cushion until seated (Figure 1, item "D").

5° Slide the "S" washer around the tachometer body (Figure 1, item "E").

6° Mount the fastening brackets in a position such that the tip rest into the depressed area of the "S" washer (Figure 1, item "F").

7° Install the thumb screws and tighten.



RL/lb

LITHO IN CANADA

Technical Information Department.